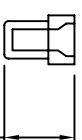
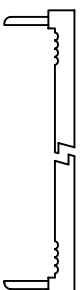
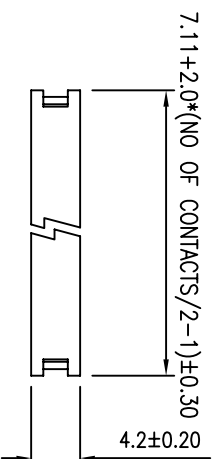
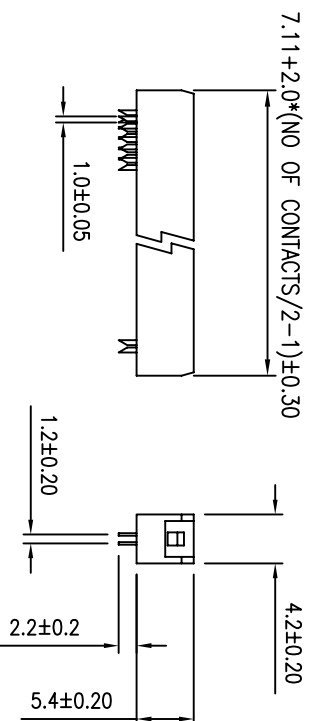
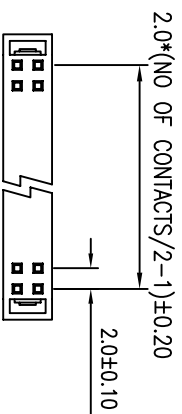


REV	ECN NO.	APP.	DATE
A	NEW DESIGN		



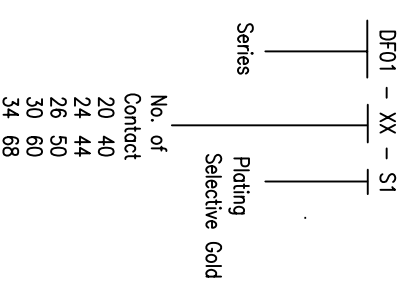
8.6±0.2



**SPECIFICATION**

- \* Current Rating: 1 A
- \* Withstanding Voltage: 500 VAC ( 1 min. )
- \* Insulation Resistance: 1000 Megohms min.
- \* Contact Resistance: 20 Milliohms max.
- \* Operating Temperature: -40°C to +85°C

**ORDER INFORMATION**



**MATERIAL**

- \* Contact: Phosphor Bronze
- \* Insulator: PBT & 30% G. F.
- \* Plated: Selective Gold

**SHINHWHA TECH CO.,LTD**

0.0±	SCALE:	TITLE:	PART NO:
0.00±	UNIT: MM	2.00MM (.079") Center I.D.C	APP BY:
0.000±	SOCKET	SOCKET	CHK BY:
		MATL: PBT + 30% G.F.	DR BY:
		DWG. NO. DF01	

